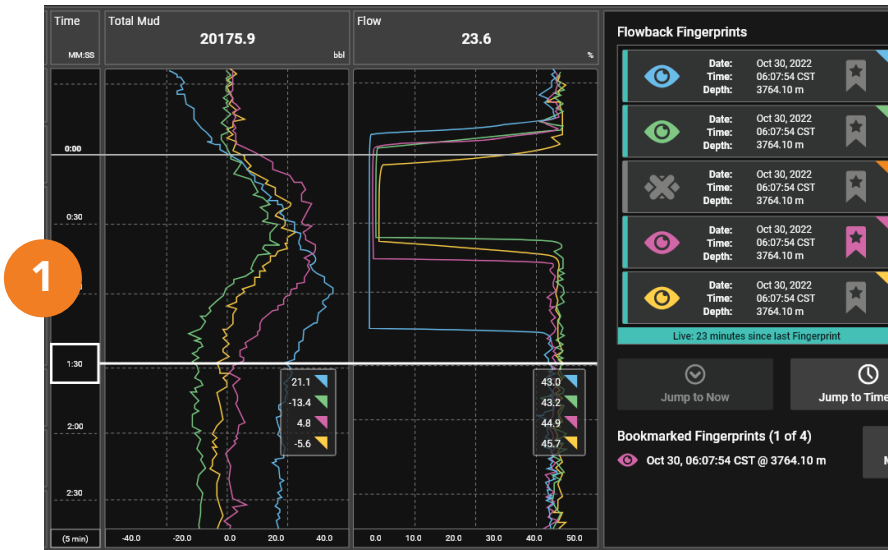


Flowback Fingerprint



Every rig has a “flowback fingerprint”, which refers to the expected Volume and Flow readings when the pumps are turned off and fluid returns to the tanks. Monitoring flowback is one of the only ways to catch potential gain/loss issues during pumps-off events.

- 1 When the pumps turn off, flowback data is captured for Total Mud and Flow traces.

View and compare live, historical and bookmarked flowback fingerprints.

- 2 You can view Flowback Fingerprint from DataHub on your desktop / laptop computer.

FEATURE VIDEO:

Scan the QR code for a short demo video.

